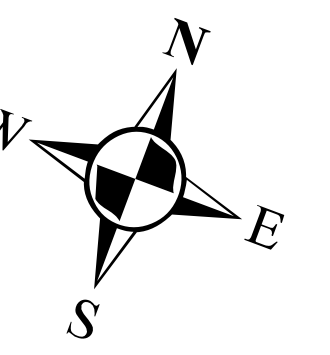


OFFICIAL ELECTION DISTRICT MAP

in
Princeton
Mercer County, New Jersey
DATE: August 24, 2022



HOPWELL TOWNSHIP
MERCER COUNTY

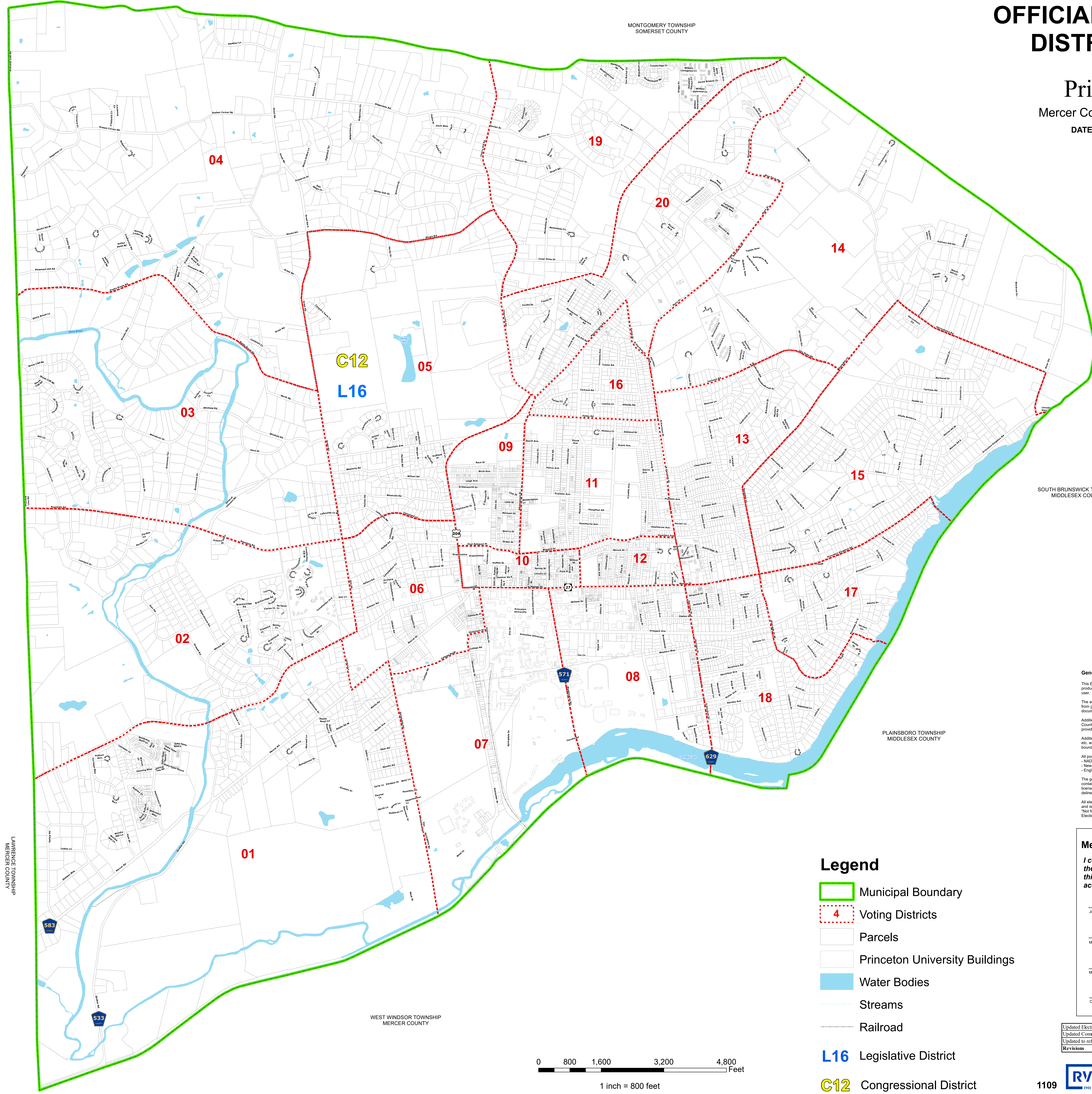
MONTGOMERY TOWNSHIP
SOMERSET COUNTY

FRANKLIN TOWNSHIP
SOMERSET COUNTY

SOUTH BRUNSWICK TOWNSHIP
MIDDLESEX COUNTY

PLAINSBORO TOWNSHIP
MIDDLESEX COUNTY

WEST WINDSOR TOWNSHIP
MERCER COUNTY



General Notes and Data Sources:
This Election district boundary map is for demonstration purposes only, any use of this product with respect to accuracy and precision shall be the sole responsibility of the end user.
The areas, boundaries and details, shown on this election map, are referenced, in part, from ground surveys, aerial surveys and recorded plans, tax assessment maps and documents, and are to be used for ward/election district boundary purposes only.
Additional ward/election district boundary and location data was provided by the Mercer County Board of Elections. The 2020 Census demographic data was obtained and provided by the U.S. Census Bureau: <http://www.census.gov/>.
Additional cadastral feature mapping data, such as, waterways, roadways, railroads, etc. was obtained from the New Jersey Geographic Information Network. Parcel boundaries were maintained by NGSN and last updated in October 2018.
All positions are based on the following:
- NAD 83 (horizontal datum)
- New Jersey State Plane Coordinate System
- English units (feet)
The geospatial accuracy and precision of the Geographic Information System (GIS) data contained in this mapping has not been developed nor verified by a professional licensed land surveyor and shall not be nor is intended to be used in matters requiring delineation and location of true ground horizontal and/or vertical controls.
All election mapping was prepared in compliance with Title 15, 19 and Title 40 statutes and is the property of the Mercer County Board of Elections and states the following: "Not for distribution, no reproduction without permission by Mercer County Board of Elections"

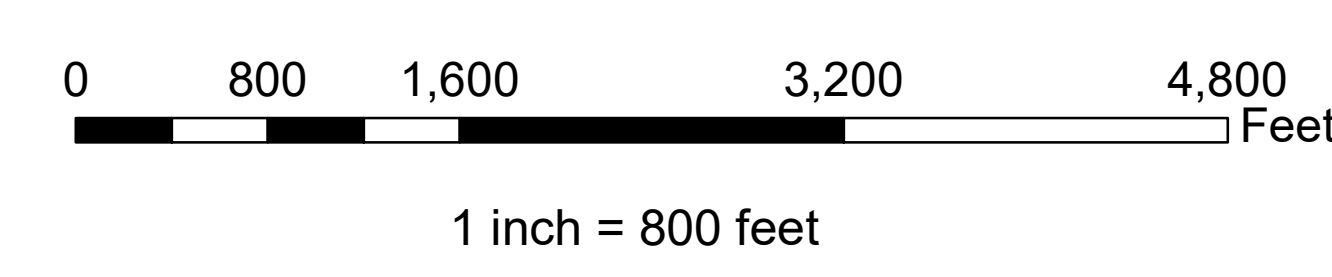
Mercer County Board of Elections

I certify that, to the best of my knowledge, the ward & election boundaries shown on this map are those legally in effect and are accurate of this date.

Jill Moyer, Chairwoman _____ Date _____
Martin J Jennings, Esp., Secretary _____ Date _____
Mary Corrigan, Commissioner _____ Date _____
Charles Farina, Commissioner _____ Date _____

Legend

- Municipal Boundary
- Voting Districts
- Parcels
- Princeton University Buildings
- Water Bodies
- Streams
- Railroad
- Legislative District
- Congressional District



Updated Election district boundaries	MCBOE	12/12/2023
Updated Commissioner signature block & map title	MCBOE	7/2/2019
Updated to reflect the signature block change	MCBOE	11/26/2018
Revisions	Auth.	Date

RVE REMINGTON & VERNICK ENGINEERS
2055 SPRINGDALE ROAD, CHERRY HILL, NJ 08003
(856) 795-9595, FAX (856) 795-1882, RVE.COM
Certificate of Authorization: 21 GA 28003100
Elevations • Elevation • Service